



Sharp Ply Group

Our aim is to be competitive by offering advanced formwork materials, durable shuttering systems that reduce project time and cost, by meeting global benchmarks in environmental responsibility, and through operations supported by strong distribution networks and faster service support.

Paras Chowatia
Managing Director & Founder



What will be the company's strategy to be competitive in the rapidly growing CE market of India?

With large-scale national programs such as the National Infrastructure Pipeline, industrial corridors, smart cities, and sustainable mobility projects, the demand for technologically advanced, durable, and environmentally responsible materials and equipment is rising. Global OEMs and supply chains are now much more integrated with India, and tightening regulatory frameworks around sustainability, safety, and efficiency are accelerating the adoption of higher-performance construction solutions.

From our perspective at Sharp Ply Group, competitiveness in this evolving environment will be shaped by three clear strategies:

- Innovation-led differentiation, with advanced formwork materials, engineered solutions, and durable shuttering systems that reduce project time and cost.
- Sustainability and compliance, ensuring our products meet emerging global benchmarks in environmental responsibility, circularity, and lifecycle performance.
- Operational excellence, supported by strong distribution networks and faster service support.

The market is maturing rapidly, and companies that combine global standards with local understanding will lead the next decade of growth.

How is the Sharp Ply Group expanding its global footprint, strengthening exports, and integrating international technologies?

The Sharp Ply Group has been strategically expanding its international presence by collaborating with leading global companies to introduce next-generation formwork materials and

engineered wood solutions that enhance strength, reduce weight, and prolong product lifecycles.

We participate actively in global trade fairs and technical exchanges for continuous exposure to emerging innovations and evolving customer expectations. This combination of global integration and local manufacturing expertise helps us remain competitive, agile, and future-ready.

How is Sharp Ply promoting energy efficiency, recycling, and waste utilization to bring sustainability in its operations and products?

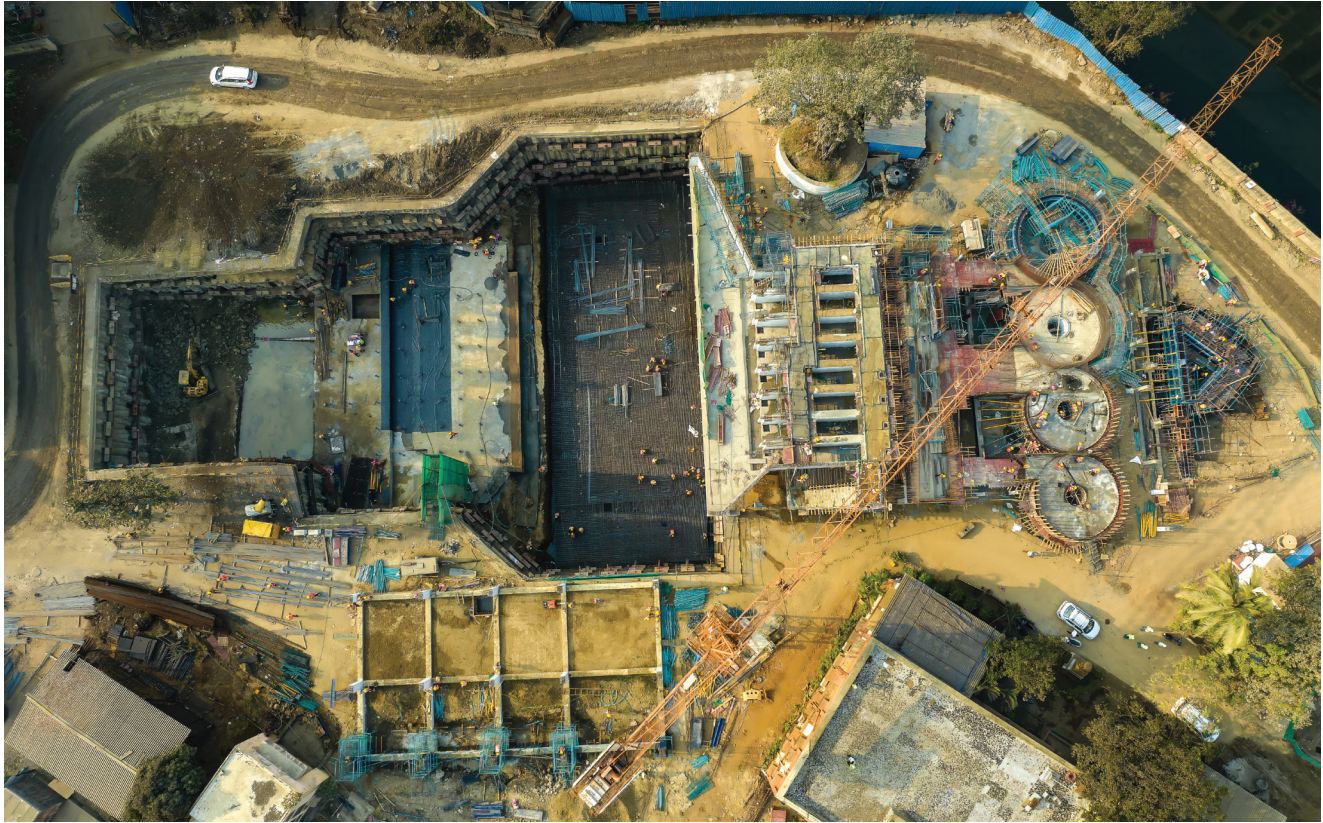
We have long believed that sustainability and performance must go hand-in-hand. Our contributions toward India's net-zero ambition include low emission wood and formwork systems; sustainably sourced raw materials; extended-life formwork solutions that reduce consumption, waste, and the environmental footprint on construction sites; recycling and repurposing programs for off-cuts and end-of-life panels, promoting circularity within our operations.

Our energy-efficient manufacturing, with gradual transitions toward cleaner energy sources and process optimization, aims to reduce carbon intensity. Our lightweight, yet high-strength products reduce logistical emissions and improve overall project efficiency.

Across the industry, we see huge potential in lifecycle-based design, material efficiency, green procurement, and sustainable construction practices. These shifts can accelerate India's pathway to a low-carbon infrastructure ecosystem.

What initiatives has the company taken to promote inclusivity, diversity, and skill development within its workforce?

Our key initiatives include skill development opportunities and hands-on training for site technicians to improve formwork



efficiency, safety, and product longevity. Through workforce diversity programs, we encourage greater participation of women in operations, quality, and technical roles. We have continuous learning modules for employees, focused on leadership, digital literacy, and emerging engineering technologies. These initiatives help build a more inclusive, skilled, and future-ready ecosystem across all levels of our operations.

How is your company reinforcing trust and loyalty in its customers?

Customer trust is the foundation of our brand. We reinforce this through transparent quality assurance processes, including clear product specifications, testing certifications, and consistent performance benchmarks.

We provide rapid after-sales support, backed by technical guidance, on-site assistance, and a responsive pan India branch network. Ethical sourcing and responsible manufacturing ensure environmental compliance and high workplace safety standards.



We have formed long-term partnerships, built around reliability, timely delivery, and a commitment to helping customers reduce project costs and improve efficiency. Our goal is not just to supply products, but to become a trusted solutions partner.

What will the company showcase at EXCON 2025?

We will showcase innovations like HANDI MONO that reflect our commitment to sustainability, service reliability, and competitiveness. Building on the success of our earlier launch — the Handi Speedy Formwork for Columns and Walls, this next-generation, monolithic solution is a major advancement in modular formwork engineering. It allows contractors to integrate their existing in-house staging and shoring inventory with our Handi Speedy Formwork, enabling them to execute slab and beam casting using the same system. It also supports monolithic casting where required, making it a truly versatile and future-ready solution.